

**Name of Program: Architectural Design I**  
**Course: (Student B. Arch.)**  
**Title of Program: Korlai Village, Maharashtra**  
**Year: First year**  
**Practical Academic Year: 2021-22**

<b>Organized By</b>	MET School of Architecture and Interior Design
<b>Objectives</b>	Study of a nearby rural, semi urban settlement / community for study, analysis and documentation of its built elements, open spaces and associated architectural character.
<b>Date/Duration of Activity</b>	09/06/2022 to 12/06/2022
<b>Venue</b>	<b>Korlai Village, Maharashtra</b>
<b>Photographs available</b>	Photograph Available
<b>Brief about the Program (Activity/Event)</b>	Korlai being a coastal village, the first year students studied the fishermen's settlement (Koliwada) at Korlai. This gives a context which has a strong influence of topography and the common occupation of fishing that is practiced, which is rare in the context that we reside in.
<b>Students Outcome/Works example</b>	Students are supposed to make A1 size sheets of measured drawings.

**Faculty in-charge**

**Approved by**



Students taking measurements using tube level



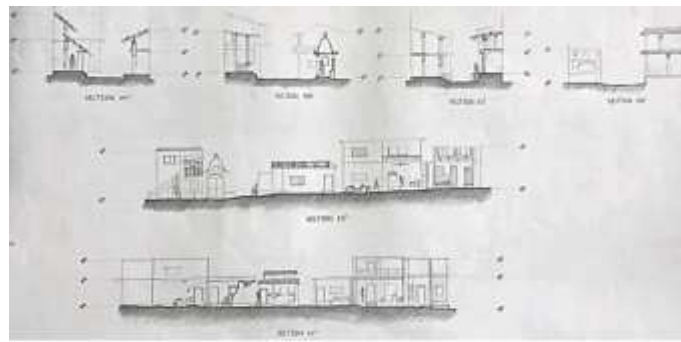
Students Making Measure drawings



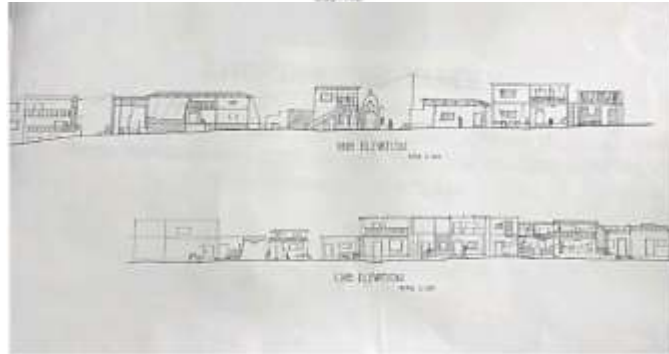
Faculty explaining the process of Measurement



Students and Faculties are at Korlai fort



SECTIONS



ELEVATIONS

HOUSE NO. 3 CHUNEKAR FAMILY



### Students Work



### Study Models